

State of Wyoming Corner Record

(in compliance with the CORNER PERPETUATION AND FILING ACT, Wyoming Statutes, 1977, Section 36-11-101, et. seq., and the Rules and Regulations of the Board of Registration for Professional Engineers and Professional Land Surveyors)

Reverse side of this form may be used if more space is needed.

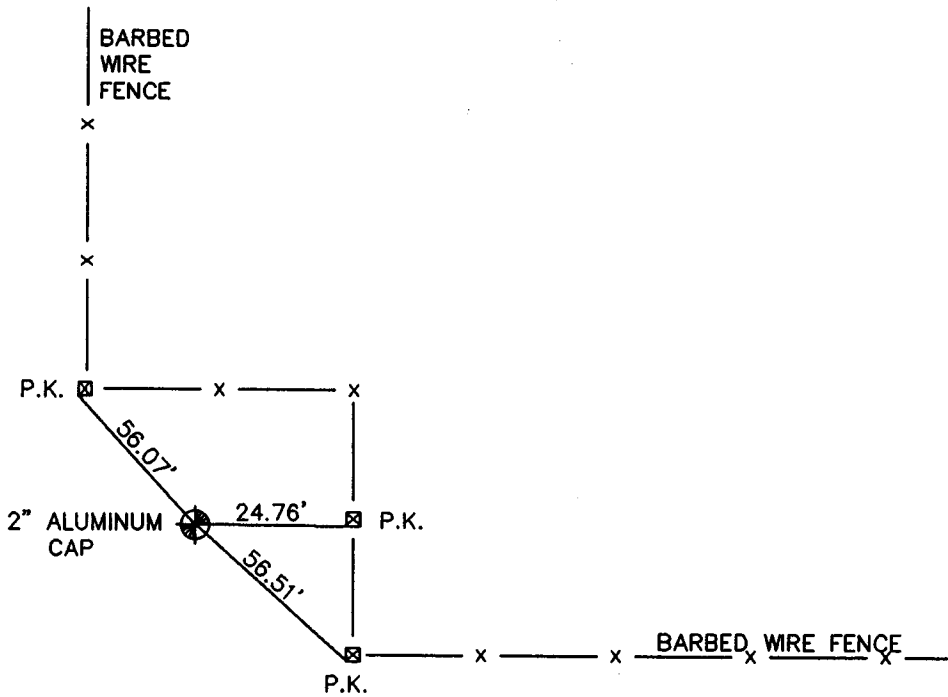
Record of original survey and citation of source of historical information (if corner is lost or obliterated). Description of corner monumentation evidence found and/or monument and accessories established to perpetuate the location of this corner. Sketch of relative location of monument, accessories, and reference points with course and distance to adjacent corner(s) (if determined in this survey). Method and rationale for reestablishment of lost or obliterated corner.

GLO RECORD: SET A GRANITE BOULDER 12" X 10" X 5" FOR CORNER TO SECTIONS 23, 24, 25, & 26.

MONUMENT FOUND: FOUND A 12" X 9" X 6" GRANITE STONE. STONE HAS "1/4" CHISELED ON BOTTOM SIDE, 2 CHISEL MARKS ON SOUTH FACE, 1 CHISEL ON EAST FACE, AND A "B" CHISELED ON NORTH FACE.

MONUMENT SET: NONE

REFERENCES: SET P.K. NAILS IN FENCE POST.



197537
 LARAMIE COUNTY CLERK
 CHEYENNE, WY.
 97 FEB 7 AM 8 37

Date of Field Work: 7-5-95 Office Reference: 95154

CROSS INDEX DIAGRAM

Firm/Agency, Address

STEIL SURVEYING SERVICES, LLC

1102 WEST 19th STREET

CHEYENNE WY 82001

Telephone Number: (307) 634-7273

This corner record was prepared by me or under my direction and supervision.
 SEAL & SIGNATURE

A	1	2	3	4	5	6	7	8	9	10	11	12	13	14	15	16	17	18	19	20	21	22	23	24	25
B																									
C	6			5						4															
D																									
E																									
F																									
G	7			8						9															
H																									
I																									
J																									
K																									
L	18			17						16															
M																									
N																									
O																									
P	19			20						21															
Q																									
R																									
S																									
T	30			29						28															
U																									
V																									
W																									
X	31			32						33															
Y																									
Z																									



BOOK 1443

Corner Name: SOUTHWEST CORNER Section: 24 T.15N R.68W; 6th P.M. Cross-Index No.: R-21
 SBRPEPLS/PLSW: March 1994

0948